

# The Role of Decomposition Kinetics in Pyrolysis Modeling – Application to a Fire Retardant Polyester Composite

CHRIS LAUTENBERGER<sup>1</sup>, ESTHER KIM<sup>2</sup>, NICHOLAS DEMBSEY<sup>2</sup>, and CARLOS FERNANDEZ-PELLO<sup>1</sup>

<sup>1</sup>University of California, Berkeley  
Department of Mechanical Engineering  
Berkeley, CA 94720

<sup>2</sup>Worcester Polytechnic Institute  
Department of Fire Protection Engineering  
100 Institute Road  
Worcester, MA 01609

## ABSTRACT

This work assesses the effect of decomposition kinetics on overall pyrolysis behavior using experimental data from thermogravimetric analysis (TGA) and Fire Propagation Apparatus (FPA) experiments. TGA data are presented for an unsaturated brominated polyester resin (reinforcement free), and the FPA is used to investigate the pyrolysis behavior of a fiber reinforced polymer (FRP) composite slab with matrix comprised of the same resin tested via TGA. Three different kinetic models are fit to the TGA data: single-step  $n^{\text{th}}$  order, 3-step  $n^{\text{th}}$  order, and 3-step  $n^{\text{th}}$  order with one autocatalytic step. These kinetics models are then used to simulate the pyrolysis of a composite slab in the FPA, with thermophysical properties estimated by genetic algorithm optimization. It is shown that the two 3-step mechanisms provide nearly identical calculations of total mass loss rate (MLR) in the FPA, while the single-step mechanism provides similar, but quantitatively different, MLR predictions. Although no broad conclusions regarding the importance of multi-step thermal decomposition kinetics can be drawn on the basis of a single study, detailed reaction mechanisms may be superfluous unless TGA curves show multiple distinct reaction peaks and/or all thermophysical properties/model input parameters are precisely known.

**KEYWORDS:** modeling, heat transfer, pyrolysis, composites

## NOMENCLATURE LISTING

$c$	specific heat capacity (J/kg-K)	$\beta$	heating rate (K/min)
$E$	activation energy (J/mole)	$\gamma$	radiant conductivity length (m)
$h$	specific enthalpy (J/kg)	$\delta$	thickness (m)
$h_c$	convective heat transfer coefficient (W/m <sup>2</sup> -K)	$\varepsilon$	emissivity (-)
$\Delta H$	change in enthalpy (J/kg)	$\kappa$	radiant absorption coefficient (m <sup>-1</sup> )
$k$	thermal conductivity (W/m-K)	$\rho$	density (kg/m <sup>3</sup> )
$K$	# of condensed phase reactions	$\sigma$	Stefan–Boltzmann constant (W/m <sup>2</sup> -K <sup>4</sup> )
$m$	mass (kg), autocatalytic exponent (-)	$\phi$	generic variable
$m''$	mass per unit area (kg/m <sup>2</sup> )	$\psi$	porosity
$\dot{m}''$	mass flux (kg/m <sup>2</sup> s)	$\dot{\omega}'''$	volumetric reaction rate (kg/m <sup>3</sup> -s)
$M$	# of condensed phase species	<b>Subscripts</b>	
$n$	reaction order (-), property exponent (-)	$d$	destruction
$N$	# of gas phase species	$f$	formation
$\dot{q}''$	heat flux (W/m <sup>2</sup> )	$g$	gaseous
$\dot{Q}'''$	volumetric heat release rate (W/m <sup>3</sup> )	$i$	condensed phase species $i$
$t$	time (s)	$j$	gas phase species $j$
$T$	temperature (K)	$k$	reaction $k$
$X$	volume fraction (-)	$r$	reference or radiative
$Y$	mass fraction (-)	$s$	solid
$z$	distance (m)	$vol$	volatilization
$Z$	pre-exponential factor (s <sup>-1</sup> )	0	at $t = 0$ or $z = 0$
<b>Greek</b>		$\infty$	ambient, or at the end of an experiment
$\alpha$	conversion	$\delta$	At $z = \delta$

## INTRODUCTION

Bench-scale flammability tests such as the Cone Calorimeter and Fire Propagation Apparatus (FPA) provide a mechanism to assess a material's reaction to fire. From these laboratory tests, a material's overall flammability can be evaluated on the basis of measured quantities such as heat release rate or mass loss rate (MLR) history, species yields, smoke production rate, heat of combustion, etc. Furthermore, by conducting experiments at multiple heat flux levels, apparent material fire properties such as thermal inertia, ignition temperature, and heat of gasification can be determined. These quantities are useful for establishing relative rankings of material flammability or as input to semi-empirical fire growth models.

In recent years, detailed physics-based pyrolysis models have seen increased usage in the fire community. For example, Fire Dynamics Simulator Version 5 (FDS5) contains a comprehensive pyrolysis model capable of simulating the thermal decomposition of both charring and noncharring solids. This pyrolysis model can accommodate multi-step decomposition kinetics, layered composition, and in-depth absorption of radiation. However, inclusion of these physical phenomena comes at a price: a large number of adjustable parameters ("material properties") must be specified to characterize a particular material. These properties include pyrolysis kinetics (pre-exponential factor, activation energy, reaction order), thermal properties (specific heat capacity, thermal conductivity), and radiative characteristics (surface emissivity, in-depth radiation absorption coefficient). For many of these material properties, there are no standardized and widely accepted techniques to determine these properties from laboratory tests. The number of adjustable parameters becomes onerous when multi-step reactions with multiple condensed phase species having temperature-dependent thermal properties are considered.

An optimal pyrolysis modeling strategy balances complexity with minimizing the number of adjustable input parameters. This can be accomplished by including only essential physics or reactions in a simulation, and omitting all extraneous physics and reactions. However, it is not always obvious what constitutes "essential" or "extraneous" physics and reactions. This multifaceted and complex issue cannot be completely resolved in a single paper, so here we focus on one particular aspect: decomposition kinetics. Using a fire retardant polyester composite as an example, we investigate whether a multi-step kinetic mechanism extracted from thermogravimetric analysis (TGA) provides a more "accurate" description of solid fuel slab pyrolysis (e.g. in an FPA experiment) than a single-step global  $n^{\text{th}}$  order Arrhenius reaction (the conventional pyrolysis modeling paradigm in the fire community). This fiber reinforced polymer (FRP) composite is considered a representative "practical" heterogeneous material.

Below, a methodology is presented that can be used to assess the minimum number of reaction steps that must be included in a decomposition mechanism to capture the major features of differential thermogravimetric (DTG) curves. First, two different three-step decomposition mechanisms and a single-step global mechanism are fit to DTG curves obtained at four heating rates between 5 K/min and 50 K/min under nitrogen. Next, holding these kinetic parameters fixed, an FPA experiment of a 1 cm thick FRP composite (with matrix comprised of the same resin tested via TGA) irradiated at 50 kW/m<sup>2</sup> under nitrogen is simulated with the three different decomposition mechanisms.

## CONDENSED PHASE PYROLYSIS MODEL

The calculations reported here are conducted with a generalized pyrolysis model [1], similar to that used in FDS5, that can be applied to a wide variety of condensed phase fuels. This model can be applied to both 0D and 1D systems and is therefore capable simulating both "lumped" (thermogravimetric) and "slab" (Cone Calorimeter/FPA) experiments. Extensive details are given in Ref. [1] so only a brief overview is given here. Assumptions inherent in the model, as applied in this paper, include:

- Each condensed phase species has well-defined "properties": bulk density, specific heat capacity, effective thermal conductivity, and porosity. An overbar denotes a weighted or averaged quantity, i.e.  $\bar{k} = \sum X_i k_i$ .
- Specific heat capacity and effective thermal conductivity vary by as  $\phi(T) = \phi_0 (T/T_r)^{n_\phi}$  where  $T_r$  is a reference temperature,  $\phi_0$  is the value of  $k$  or  $c$  at  $T_r$ , and  $n_\phi$  specifies the temperature dependency of  $\phi$

- Radiation heat transfer across pores is accounted for by adding a contribution to the effective thermal conductivity that varies as  $\gamma T^3$ , where  $\gamma$  is a fitting parameter
- Averaged properties in conservation equations are calculated by appropriate mass or volume fraction weighting
- All gases escape to the exterior ambient with no resistance to heat or mass transfer
- Negligible heat transfer between the gas phase and the condensed phase inside the decomposing solid
- There is no net shrinkage (volume change) due to reactions or bulk density changes

The one-dimensional (slab) transient conservation equations are given as Eqs. 1-4:

*Condensed phase mass conservation:*

$$\frac{\partial \bar{\rho}}{\partial t} = -\dot{\omega}_{fg}'' \quad (1)$$

*Gas phase mass conservation:*

$$\frac{\partial(\rho_g \bar{\psi})}{\partial t} + \frac{\partial \dot{m}''}{\partial z} = \dot{\omega}_{fg}'' \quad (2)$$

*Condensed phase species conservation:*

$$\frac{\partial(\bar{\rho} Y_i)}{\partial t} = \dot{\omega}_{fi}'' - \dot{\omega}_{di}'' \quad (3)$$

*Condensed phase energy conservation:*

$$\frac{\partial(\bar{\rho} \bar{h})}{\partial t} = \frac{\partial}{\partial z} \left( \bar{k} \frac{\partial T}{\partial z} \right) + \sum_{k=1}^K \dot{Q}_{s,k}'' + \sum_{i=1}^M (\dot{\omega}_{fi}'' - \dot{\omega}_{di}'') h_i \quad (4)$$

The gaseous mass flux at any point in the decomposing solid is calculated by integrating Eq. 2 from the back face to the front face:

$$\dot{m}''(z) = \dot{m}_{\delta}'' + \int_{\delta}^z \left( \dot{\omega}_{fg}'' - \frac{\partial(\rho_g \bar{\psi})}{\partial t} \right) \quad (5)$$

where, since the back face is assumed impermeable,  $\dot{m}_{\delta}'' = 0$ . When discretized, the above equations yield a system of coupled algebraic equations that are solved numerically. The recommendations of Patankar [2] are followed closely. Due to the nonlinearity introduced by the source terms and temperature-dependent thermophysical properties, a fully-implicit formulation is adopted for solution of all equations. The condensed phase energy conservation equation is solved using a computationally efficient tridiagonal matrix algorithm (TDMA). The condensed phase mass and condensed phase species conservation equations are solved with a customized fully implicit solver that uses overrelaxation to prevent divergence. Source terms are split into positive and negative components to ensure physically realistic results and prevent negative mass fractions or densities from occurring [2]. Newton iteration is used to extract the temperature from the weighted enthalpy and the condensed phase species mass fractions [1].

The initial conditions describe the state of the solid (density, species mass fractions) at  $t=0$ . The “front-face” boundary condition (where radiation from the FPA heaters is incident) is a convective-radiative balance. Following de Ris and Khan [3], the back-face of the FRP composite loses heat to the underlying sample holder (3 mm Cotronics ceramic paper thermal insulation) proportional to an inverse contact resistance. The sample holder is treated in the model as a separate layer, with its temperature-dependent thermal properties estimated from de Ris and Khan [3].

The above governing equations can also be used to simulate thermogravimetric experiments. Since this involves only a single 0D lumped particle ( $Bi \ll 1$ ), the preceding coupled partial differential equations

become coupled (transient) ordinary differential equations, i.e. only a single control volume (representing a thermogravimetric sample) is considered. Since the particle temperature is assumed equal to the atmosphere temperature (which increases linearly with time) the condensed phase energy conservation (Eq. 4) is replaced with the following relation:

$$T = T_0 + \beta t \quad (6)$$

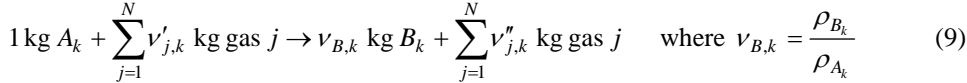
The condensed phase mass and species conservation equations (Eqs. 1 and 3) remain unchanged, with the exception that the partial time derivative becomes a total time derivative since there is no spatial variation in mass or species (homogeneous particle). Differential thermogravimetric curves are calculated from the formation rate of gases normalized by the initial particle bulk density:

$$\frac{d}{dt} \left( \frac{m''}{m_0''} \right) = - \frac{\dot{\omega}_{fg}''}{\bar{\rho}|_{t=0}} \quad (7)$$

Thermogravimetric curves are then calculated by integrating Eq. 7:

$$1 - \alpha(t) = \frac{m''}{m_0''}(t) = 1 - \frac{1}{\bar{\rho}|_{t=0}} \int_0^t \dot{\omega}_{fg}''(\tau) d\tau \quad (8)$$

The governing equations presented earlier contain several source terms attributed to chemical reactions ( $\dot{\omega}_{fg}''$ ,  $\dot{\omega}_{fi}''$ ,  $\dot{\omega}_{di}''$ , and  $\dot{Q}_{s,k}''$ ) that must be quantified. Heterogeneous reaction stoichiometry can be written in general form as:



Each reaction  $k$  converts a condensed phase species having index  $A_k$  to a condensed phase species having index  $B_k$ . Gases may be consumed or produced in the process, but it is assumed here for simplicity that  $\nu'_{j,k} = 0$  and  $N = 1$ . The destruction rate of condensed phase species  $A_k$  by reaction  $k$  is calculated as:

$$\dot{\omega}_{dA_k}'' = f \left( \frac{\bar{\rho} Y_{A_k}}{\bar{\rho}|_{t=0}} \right) \bar{\rho}|_{t=0} Z_k \exp \left( - \frac{E_k}{RT} \right) \quad (10)$$

The term  $f(\bar{\rho} Y_{A_k} / \bar{\rho}|_{t=0})$  on the RHS of Eq. 10 is the kinetic model, described in greater detail below. The formation rate of condensed phase species  $B_k$  by reaction  $k$  is related to bulk density ratios:

$$\dot{\omega}_{fB_k}'' = \nu_{B,k} \dot{\omega}_{dA_k}'' = \frac{\rho_{B_k}}{\rho_{A_k}} \dot{\omega}_{dA_k}'' \quad (11)$$

The formation rate of all gases (conversion rate of condensed phase mass to gas phase mass) by reaction  $k$  is:

$$\dot{\omega}_{fg_k}'' = (1 - \nu_{B,k}) \dot{\omega}_{dA_k}'' = \left( 1 - \frac{\rho_{B_k}}{\rho_{A_k}} \right) \dot{\omega}_{dA_k}'' \quad (12)$$

Associated with each reaction  $k$  is a heat of reaction  $\Delta H_{vol,k}$  and the source term appearing in Eq. 4 is calculated as the volumetric formation rate of gases multiplied by  $\Delta H_{vol,k}$ :

$$\dot{Q}_{s,k}'' = - \dot{\omega}_{fg_k}'' \Delta H_{vol,k} \quad (13)$$

The total source terms appearing in the conservation equations are obtained by summing over all reactions:

$$\dot{\omega}_{di}''' = \sum_{k=1}^K \delta_{i,A_k} \dot{\omega}_{dA_k}''' \quad \delta_{i,A_k} = \begin{cases} 1 & \text{if } i = A_k \\ 0 & \text{if } i \neq A_k \end{cases} \quad (14)$$

$$\dot{\omega}_{ji}''' = \sum_{k=1}^K \delta_{i,B_k} \dot{\omega}_{jB_k}''' \quad \delta_{i,B_k} = \begin{cases} 1 & \text{if } i = B_k \\ 0 & \text{if } i \neq B_k \end{cases} \quad (15)$$

$$\dot{\omega}_{fg}''' = \sum_{k=1}^K \dot{\omega}_{fg_k}''' \quad (16)$$

## DESCRIPTION OF RESIN AND COMPOSITE SLAB

The resin in this study is a commercially prepared brominated unsaturated polyester resin with 20% bromination by mass built in to the carbon back bone. Antimony trioxide is added to enhance flame retardancy. The resin was catalyzed with methyl ethyl ketone peroxide (MEKP). According to the product description, this resin is a low viscosity, thixod polyester resin formulated to be Class I per ASTM E84 (flame spread index < 25 and smoke developed < 450).

Composite panels (33% glass by mass and approximately 10 mm in thickness) were fabricated by hand lay-up using two different types of fiberglass mats that were fully wetted with resin. The two types of fiberglass (E-glass) used in the composite are a chopped strand mat and a glass roving with an area density of 25 g/m<sup>2</sup> and 880 g/m<sup>2</sup>, respectively. The chopped strand mat is thinner and more porous than the roving. The laminate schedule (provided by the manufacturer) is chopped strand mat and roving alternating five times with another chopped strand mat layer at the end. Visual inspection of a polished cross-section of the composite slab is consistent with this laminate schedule, but with polymer resin layers between each fiberglass layer. The chopped strand mat layer is difficult to identify in the cross section, perhaps because more resin is soaked into this layer than the roving layer. The roving layer is observed as a prominent glass layer possibly because the resin is absorbed only at the fiberglass layer surfaces leaving the interior with primarily glass.

The layered microstructure is determined to a resolution of ~0.07 mm by inspecting a polished cross-section of the composite under a microscope. Based on visual observation and comparison to global density of the composite sample, approximations of three distinct layers are proposed: 100% resin, 100% glass, and 50% resin/50% glass. The microstructure is shown schematically in Fig. 1. The lightest “box” represents 100% resin, the medium darkness box represents 50% resin/50% glass, and the darkest box represents 100% glass. Each box has a thickness of ~0.07 mm.



Fig. 1. Approximation of three distinct layers in composite microstructure.

## THERMAL DECOMPOSITION OF RESIN POLYMER

The resin’s thermal stability is investigated via TGA using a PerkinElmer Thermogravimetric Analysis 7 (TGA7) instrument. Experiments are conducted under nitrogen at heating rates of 5 K/min, 10 K/min, 30 K/min, and 50 K/min. The initial mass of each sample ranges from ~7.5 mg to ~10.5 mg.

### Apparent number of reaction steps – isoconversional method

Thermogravimetric experiments are often analyzed using a kinetic model of the form:

$$\frac{d\alpha}{dt} = f(\alpha)Z \exp\left(-\frac{E}{RT}\right) \quad (17)$$

Eq. 17 can also be obtained after dividing Eq. 10 by  $\bar{\rho}|_{t=0}$ , considering only a single condensed phase species, and defining the conversion  $\alpha = 1 - \bar{\rho}/\bar{\rho}|_{t=0}$ . Substituting the linear heating rate  $\beta = dT/dt$  into Eq. 17 and taking the natural logarithm of both sides gives:

$$\ln \frac{d\alpha}{dT} = \ln \left( \frac{f(\alpha)}{\beta} Z \exp \left( -\frac{E}{RT} \right) \right) = \ln \left( \frac{f(\alpha)Z}{\beta} \right) + \ln \left( \exp \left( -\frac{E}{RT} \right) \right) = \ln \left( \frac{f(\alpha)Z}{\beta} \right) - \frac{E}{RT} \quad (18)$$

Eq. 18 can be used to determine the activation energy  $E$  as a function of  $\alpha$  by plotting  $\ln(d\alpha/dT)$  against  $1/T$ . The slope of the line is  $-E/R$  [4]. If the activation energy determined via this so-called “isoconversional” (or “model free”) method is not a function of  $\alpha$ , this is indicative of a single step reaction. If however the activation energy varies significantly with conversion, then multiple reactions having different activation energies likely occur.

As an example, Fig. 2 shows the apparent activation energy as a function of conversion determined with the above method for the brominated polyester resin described earlier. It can be seen from Fig. 2 that the apparent activation energy increases from  $\sim 70$  kJ/mol to  $\sim 145$  kJ/mol in the range  $0 < \alpha < 0.2$ . Over the range  $0.2 < \alpha < 0.9$ , the activation energy is relatively constant, varying between  $\sim 125$  kJ/mol and  $\sim 140$  kJ/mol. For  $\alpha > 0.9$ , the apparent activation energy increases, approaching 200 kJ/mol. The activation energy calculated in this way should be viewed as an estimate, rather than an exact value. What is more important than the specific value of activation energy at a particular conversion is the number of fundamental steps that this type of plot elucidates.

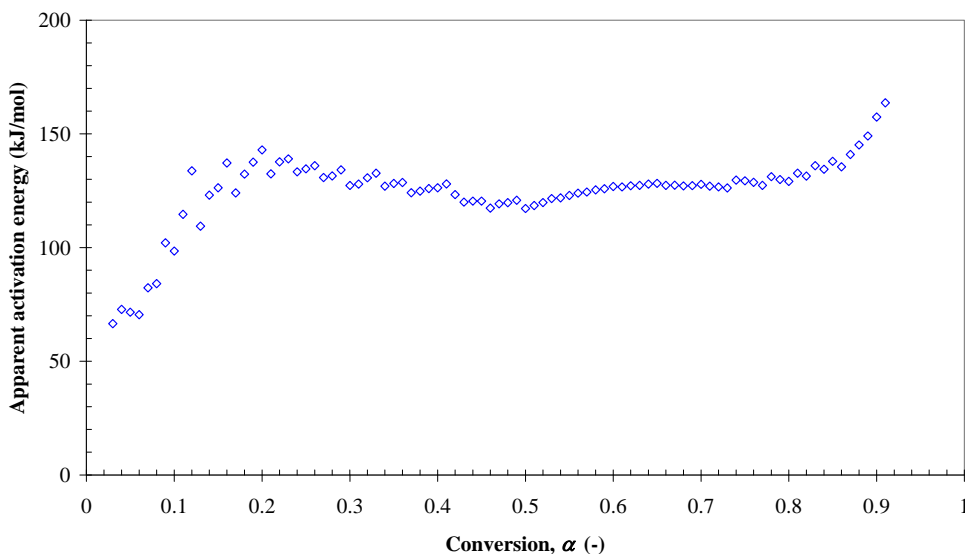


Fig. 2. Apparent activation energy of unsaturated brominated polyester resin calculated via “isoconversional” (model free) method [4].

Based on Fig. 2 and the above discussion, it can be concluded that at least three primary reactions occur. Reaction 1 is dominant over  $0 < \alpha < 0.2$ , reaction 2 is dominant over  $0.2 < \alpha < 0.9$ , and reaction 3 is dominant for  $\alpha > 0.9$ . On this basis, a 3-step mechanism is postulated:



In Eq. 19, the species beta\_resin is an intermediate species that is formed in the early stages of pyrolysis; referring to Fig. 2 above, beta\_resin is fully formed when the conversion value has reached approximately 0.2. This beta\_resin species is analogous to the  $\beta$ -foam species used in previous work [5]. Similarly, char is an intermediate species that is formed when the conversion value has reached approximately 0.93. Although approximately 97% conversion was observed at the end of each TGA experiments, complete mass loss (100% conversion) was assumed in the modeling for simplicity.

For the reaction mechanism in Eq. 19, it follows from Eqs. 9, 11, and 12 that  $v_{br} = \rho_{\text{beta\_resin}} / \rho_{\text{resin}} = 0.80$  and  $v_c = \rho_{\text{char}} / \rho_{\text{beta\_resin}} = 0.07 \rho_{\text{resin}} / 0.80 \rho_{\text{resin}} = 0.088$ . The single-step approximation to the above reaction mechanism used here is:  $\text{resin} \rightarrow v_{c,ss} \text{char} + (1 - v_{c,ss}) \text{gas}$ , where  $v_{c,ss} = \rho_{\text{char}} / \rho_{\text{resin}} = 0.07$ .

### Kinetic models

In the three-step reaction mechanism, two different forms of  $f(\alpha)$  are contemplated for the second step (Eq. 19.2):

$$f(\alpha) = (1 - \alpha)^n \quad \text{standard } n^{\text{th}} \text{ order reaction} \quad (20a)$$

$$f(\alpha) = \alpha^m (1 - \alpha)^n \quad \text{autocatalytic reaction} \quad (20b)$$

Eq. 20a represents current “standard” practice for condensed phase kinetic modeling in the fire community, and Eq. 20b is an autocatalytic reaction, which arises from chemical considerations because polyester thermostat resin thermal decomposition is probably caused by free radical depolymerization. Depolymerization is the same process as polymerization except the chain length becomes shorter rather than longer. An autocatalytic reaction means that the reaction product (here, free radicals) is the catalyst for the reaction itself. A thermal insult on the polymer generates free-radicals that start to attack other parts of the polymer. Essentially, free radicals attack on the polymer breaks chemical bonds, promoting further degradation of the unreacted polymer. The  $\alpha^m$  part of the kinetic model in Eq. 20b is attributed to attack by free radicals and the  $(1 - \alpha)^n$  part of the kinetic model in Eq. 20b is because the absolute reaction rate drops as the sample mass decreases since there is less polymer to pyrolyze. Thus, Eq. 20b is considered a more “fundamental” kinetic decomposition model than Eq. 20a because it attempts to simulate the postulated chemical decomposition mechanism (free radical depolymerization).

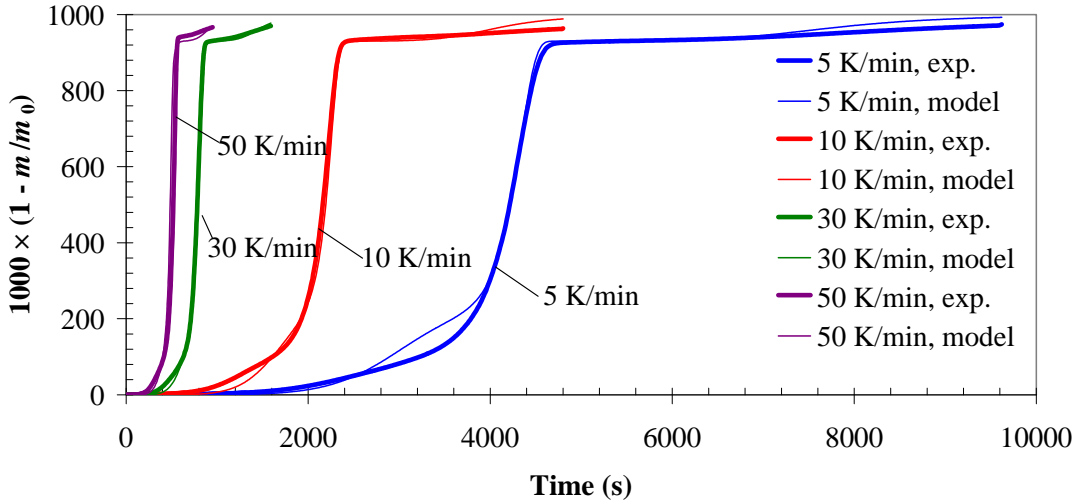
### Numerical simulation of TGA experiments

First, the model described earlier is used to simulate the thermogravimetric experiments. Kinetic parameters are estimated via genetic algorithm optimization [1] for three separate reaction mechanisms/kinetic models which are labeled as: a) Three-step autocatalytic, b) Three-step  $n^{\text{th}}$  order, c) Single-step  $n^{\text{th}}$  order. The three-step autocatalytic assumes that steps 1 and 3 are  $n^{\text{th}}$  order, and that step 2 is autocatalytic. The three-step  $n^{\text{th}}$  order and the single-step  $n^{\text{th}}$  order assume that all steps are  $n^{\text{th}}$  order. The best-fit results are shown in Fig. 3, with best-fit kinetic parameters listed in Table 1.

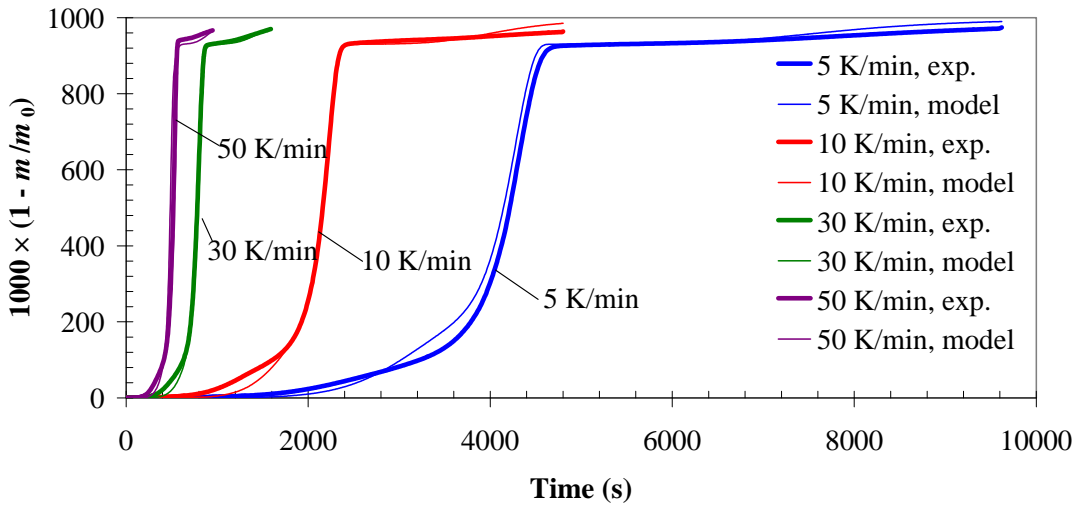
It can be seen from Fig. 3 that the two 3-step mechanisms ( $n^{\text{th}}$  order and autocatalytic) capture better the early and late stages of mass loss than the single-step reaction. The 3-step mechanisms approach zero remaining mass at long times, whereas 7% of the sample’s mass remains at the end of the simulation with the single-step mechanism. Experimentally, less than 3% of the sample mass remained at the end of a TGA run as residue. There is little difference between the three-step autocatalytic mechanism (case a) and the three-step  $n^{\text{th}}$  order mechanism (case b), suggesting that the additional parameter ( $m$ ) introduced for the autocatalytic reaction may be extraneous. On balance, the autocatalytic reaction mechanism does provide a slightly better fit to the 5 K/min TG data between 4000 and 4800 s. It appears from Fig. 3 that the models provide a better fit to the experimental data at higher heating rates; however, this is a nuance of plotting the results as a function of time rather than temperature because the data from the lower heating rates appear stretched on the plots, and the data from the higher heating rates appear compressed.

Table 1. Optimized kinetics parameters for three different kinetic models. (a) Three-step autocatalytic; (b) Three-step  $n^{\text{th}}$  order; (c) Single-step  $n^{\text{th}}$  order.

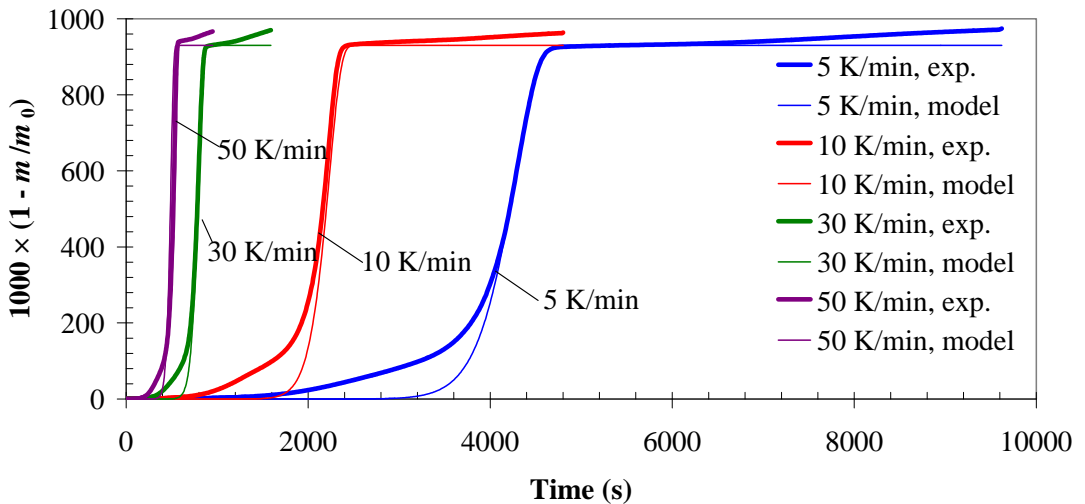
	$Z_1$ (s <sup>-1</sup> )	$E_1$ (kJ/mol)	$n_1$ (-)	$Z_2$ (s <sup>-1</sup> )	$E_2$ (kJ/mol)	$n_2$ (-)	$m_2$	$Z_3$ (s <sup>-1</sup> )	$E_3$ (kJ/mol)	$n_3$ (-)
a	$4.39 \times 10^2$	55.8	1.09	$2.19 \times 10^{11}$	170.1	0.87	0.61	$5.66 \times 10^6$	139.0	2.47
b	$3.42 \times 10^2$	56.1	1.03	$3.55 \times 10^{11}$	174.1	0.80	0	$1.75 \times 10^6$	127.6	2.64
c	-	-	-	$4.92 \times 10^9$	151.4	0.90	0	-	-	-



(a)



(b)



(c)

Fig. 3. Comparison of experimental and modeled thermogravimetric curves for three different kinetic models. (a) three-step autocatalytic; (b) three-step  $n^{\text{th}}$  order; (c) Single-step  $n^{\text{th}}$  order.

## SIMULATION OF FPA EXPERIMENTS

The preceding TGA experiments were conducted with polyester resin that contained no glass reinforcements. This same resin forms the matrix of the FRP composite slab (having woven glass reinforcements) that is tested in the FPA. It was shown in Fig. 1 that the composite slab is far from homogeneous, with distinct layers of 100% glass, 100% resin, and a 50%/50% mixture of resin and glass. However, as a first approximation and to focus on decomposition kinetics, the heterogeneous FRP composite slab is modeled here as an equivalent homogeneous slab having the same global glass content as the FRP composite (33% by mass). It is assumed here that the glass is inert and that only the resin reacts. We plan to address the effect of layered structure on slab pyrolysis behavior in future work.

The FPA experiments involve irradiating (under nitrogen) circular FRP composite samples with a radius of 9.7 cm (area of 74 cm<sup>2</sup>) at 50 kW/m<sup>2</sup> and measuring the resultant mass loss. To facilitate temperature measurements, thermocouples are positioned at the sample surface, 1/3 and 2/3 of its thickness, and at its back face. The sample holder consists of 3 mm Cotronics ceramic paper thermal insulation [3]. To ensure that most of the incident radiation is absorbed at the irradiated surface, samples are coated with a thin layer of carbon black in accordance with ASTM E2058. The composite tested here (referred to as material “1a”) has a thickness of 10.2 mm and a glass content of 33% by mass.

In the numerical simulations of the FPA experiments, the kinetics coefficients extracted earlier from TGA are held fixed. Three separate cases (corresponding to each kinetic model) are considered: 3-step autocatalytic, 3-step  $n^{\text{th}}$  order, and single step. First, the unknown model input parameters (thermophysical properties, reaction enthalpies, and surface emissivities) are estimated by genetic algorithm optimization [1] from the FPA data for the  $n^{\text{th}}$  order case since it is the standard model in the fire community and was shown to provide a very good fit to the TGA data in Fig 3. Next, the 3-step autocatalytic mechanism is assessed by holding fixed all input parameters and swapping the 3-step  $n^{\text{th}}$  order mechanism for the 3-step autocatalytic mechanism. The final simulation involves replacing the three-step reaction mechanism with the single-step reaction mechanism. The calculated MLR for each case is compared to the available experimental data to assess how the complexity of the reaction mechanism affects global decomposition behavior of a composite slab.

In the simulations, four condensed phase “pseudo” species are tracked: resin\_glass (33% glass by mass bonded to 67% resin by mass), betaresin\_glass (a mixture of beta resin and glass), char\_glass (a mixture of char and glass), and porous\_glass (the glass reinforcements that remain after all resin has pyrolyzed, leaving behind a porous glass structure consisting primarily of woven glass reinforcements).

As explained in Ref. [1], the bulk density of condensed phase species mixtures can be calculated as  $\bar{\rho} = \sum (Y_i / \rho_i)^{-1} = \sum X_i \rho_i$ . Here, the bulk density of species resin\_glass is calculated from the density of the resin (1350 kg/m<sup>3</sup>) and the glass (2600 kg/m<sup>3</sup>) as  $\rho_{\text{resin\_glass}} = \sum (Y_i / \rho_i)^{-1} = 1605 \text{ kg/m}^3$ . Using the relation  $\rho_{\text{resin\_glass}} = \sum X_i \rho_i = X_{\text{resin}} \rho_{\text{resin}} + X_{\text{glass}} \rho_{\text{glass}}$ , the volume fraction of glass in species resin\_glass is calculated to be 0.20. The bulk density of species betaresin\_glass is calculated as:

$$\rho_{\text{betaresin\_glass}} = \sum X_i \rho_i = X_{\text{beta\_resin}} \rho_{\text{beta\_resin}} + X_{\text{glass}} \rho_{\text{glass}} = 0.8 \times 0.8 \times 1350 + 0.2 \times 2600 = 1384 \text{ kg/m}^3$$

where use has been made of the relation  $v_{\text{br}} = \rho_{\text{beta\_resin}} / \rho_{\text{resin}} = 0.80$ . Finally, the bulk densities of species char\_glass and porous\_glass are  $\rho_{\text{char\_glass}} = \sum X_i \rho_i = 0.8 \times 0.07 \times 1350 + 0.2 \times 2600 = 596 \text{ kg/m}^3$  and  $\rho_{\text{porous\_glass}} = 0.2 \times 2600 = 520 \text{ kg/m}^3$ .

The above bulk density calculations (and the governing equations presented earlier) assume that there is no net volume change in the unpyrolyzed vs. pyrolyzed sample. The kinetic mechanism from the TGA experiments (involving resin with no reinforcements) must be adapted to fit into the above framework. Specifically, Eq. 19 becomes:

$$\text{resin\_glass} \rightarrow \nu_{\text{brg}} \text{betaresin\_glass} + (1 - \nu_{\text{brg}}) \text{gas} \quad (21.1)$$

$$\text{betaresin\_glass} \rightarrow \nu_{\text{cg}} \text{char\_glass} + (1 - \nu_{\text{cg}}) \text{gas} \quad (21.2)$$

$$\text{char\_glass} \rightarrow \nu_{\text{pg}} \text{porous\_glass} + (1 - \nu_{\text{pg}}) \text{gas} \quad (21.3)$$

For the reaction mechanism in Eq. 21, it follows from Eqs. 9, 11, and 12:

$$\nu_{\text{brg}} = \rho_{\text{betaresin\_glass}} / \rho_{\text{resin\_glass}} = 0.86, \quad \nu_{\text{cg}} = \rho_{\text{char\_glass}} / \rho_{\text{betaresin\_glass}} = 0.43, \quad \text{and}$$

$$\nu_{\text{pg}} = \rho_{\text{porous\_glass}} / \rho_{\text{char\_glass}} = 0.87.$$

The kinetics coefficients in Eq. 21 (resin/glass reaction mechanism) are the same as in Eq. 19 (reaction mechanism for 100% resin) except that the pre-exponential factors determined by thermogravimetric analysis are multiplied by the pyrolyzable volume fraction (0.8, as calculated above). An alternative is to multiply the pre-exponential factors by the pyrolyzable mass fraction, but this is not investigated here.

A comparison of the optimized model calculations and the experimental data is shown in Fig. 4 for the 3-step  $n^{\text{th}}$  order mechanism. The thermophysical properties used in these calculations are listed in Table 2 ( $\Delta H_{\text{vol}}$  is  $1.3 \times 10^5$  J/kg,  $2.3 \times 10^5$  J/kg, and  $1.4 \times 10^6$  J/kg respectively for reactions 1, 2, and 3). Fig. 4a-4c compare the measured and modeled temperatures. The maximum deviation from the experimental data is ~60 K, approximately consistent with the global measurement uncertainty of 50 K [6] indicating that the calculated temperature traces match the experimental data. The measured and calculated MLR is shown in Fig. 4d. The model correctly captures the general “dual peak” shape of the MLR curve. However, the second peak is over-calculated compared to the experimental data.

The reason for the over-calculation of the second MLR peak may be due to different pyrolyzable mass fractions of resin (i.e., different resin conversions) in the TGA and FPA experiments. From the TGA kinetic modeling above, 93% of the resin’s mass pyrolyzes in the first two steps of the reaction mechanism to form “char”. Assuming that in the FPA experiments the resin reacts to form char, but that this char does not further react, the total mass loss per unit area is:  $0.67 \times 0.93 \times 1605 \text{ kg/m}^3 \times 10.2 \text{ mm} = 10.2 \text{ kg/m}^2$  (where 0.67 is the pyrolyzable mass fraction and the 0.93 factor assumes that the char does not further react, i.e. the final resin conversion is 0.93). The cumulative mass loss calculated by the model after 900 s is  $10.5 \text{ kg/m}^2$  (resin conversion of 0.96) because in the model some of the char has reacted, i.e. char\_glass has started reacting to form porous\_glass. In comparison, the experimental data show a cumulative mass loss of only  $7.6 \text{ kg/m}^2$  (resin conversion of 0.69) after 900 s. It appears that the resin conversion is different in the TGA and FPA experiments. Although this finding has practical ramifications, the main focus of this paper is *relative* changes in slab pyrolysis behavior caused by decomposition kinetics. The differences encountered here may be caused (indirectly) by experimental error in the temperature measurements. If the measured temperature is hotter than the actual temperature of the condensed phase, the optimized model would over-predict the MLR since its thermophysical properties are optimized to make the calculated temperatures match the experimental data. Another contributing effect may be the heterogeneous nature of the composite, which is approximated here as a homogeneous equivalent. The woven glass layers could act as a thermal barrier (thereby limiting resin pyrolysis) or a physical barrier (thereby preventing pyrolyzed resin from escaping). A model that explicitly considers the laminated microstructure would be required to capture this effect.

Table 2. Optimized thermophysical properties used in slab pyrolysis simulations.

Species	$\rho_0$ (kg/m <sup>3</sup> )	$k_0$ (W/m-K)	$n_k$ (-)	$c_0$ (J/kg-K)	$n_c$ (-)	$\varepsilon$ (-)	$\gamma$ (m)
resin_glass	1600	0.240	0.116	1465	0.180	0.98	0
betaresin_glass	1384	0.278	0.239	1331	0.184	0.98	0
char_glass	596	0.130	0.165	938	0.026	1.00	$2.5 \times 10^{-3}$
porous_glass	520	0.130	0.173	924	0.025	1.00	$3.7 \times 10^{-3}$
Cotronics	168	0.028	1.270	800	0.190	1.00	0

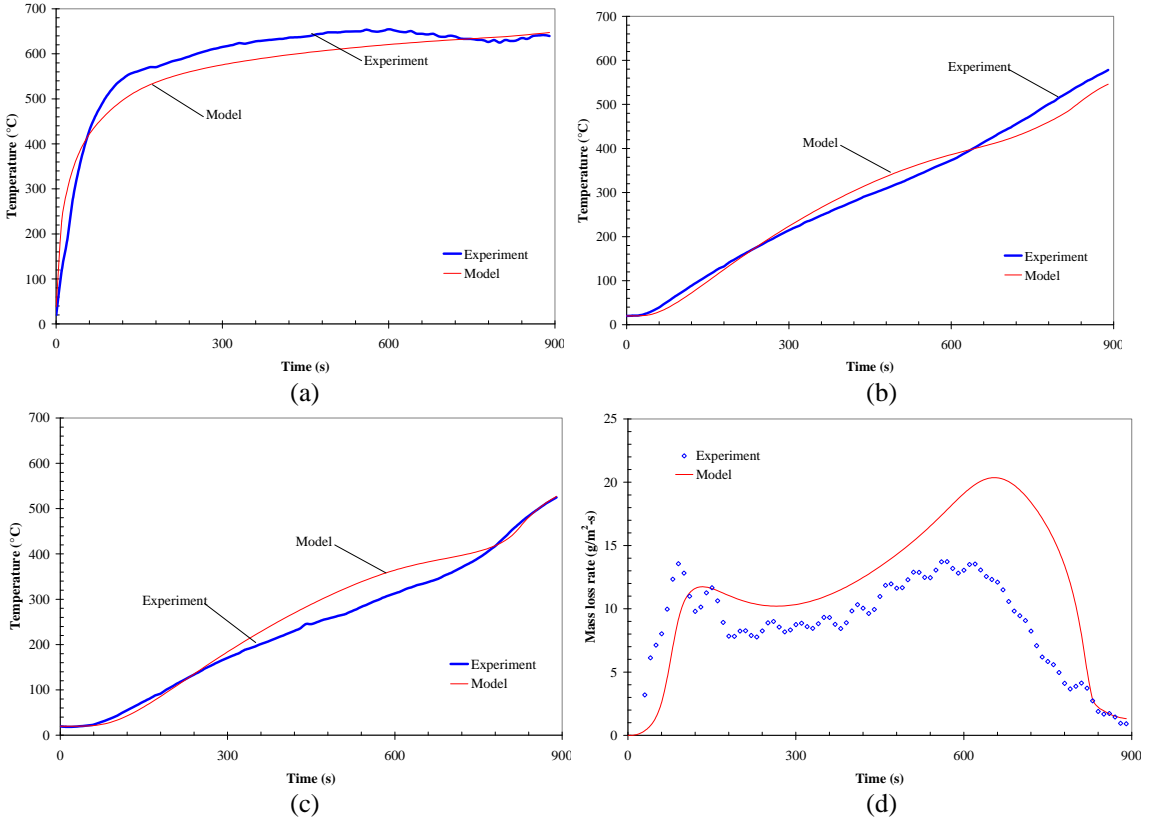


Fig. 4. Comparison of calculations (3-step  $n^{\text{th}}$  order) and experimental data for pyrolysis of FRP polyester composite in FPA at 50 kW/m<sup>2</sup> under N<sub>2</sub>. (a) Surface  $T$ ; (b) 2/3 thickness  $T$ ; (c) Back face  $T$ ; (d) MLR.

Next, the thermophysical properties determined above (Table 2) are held constant, and the two additional kinetic models are investigated. Their effect on the calculated MLR is shown in Fig. 5. There are minor differences between the calculated MLR curve for the two 3-step mechanisms ( $n^{\text{th}}$  order and autocatalytic). This is expected since these mechanisms provide similar fits to the TGA data (Fig. 3). However, the MLR calculated with the single-step mechanism is quantitatively different from the 3-step mechanisms. The early MLR is suppressed, with greater MLR at later times. This is consistent with Fig. 3, which shows that for the single step reaction mechanism the initial mass loss is not captured, but the later stages are.

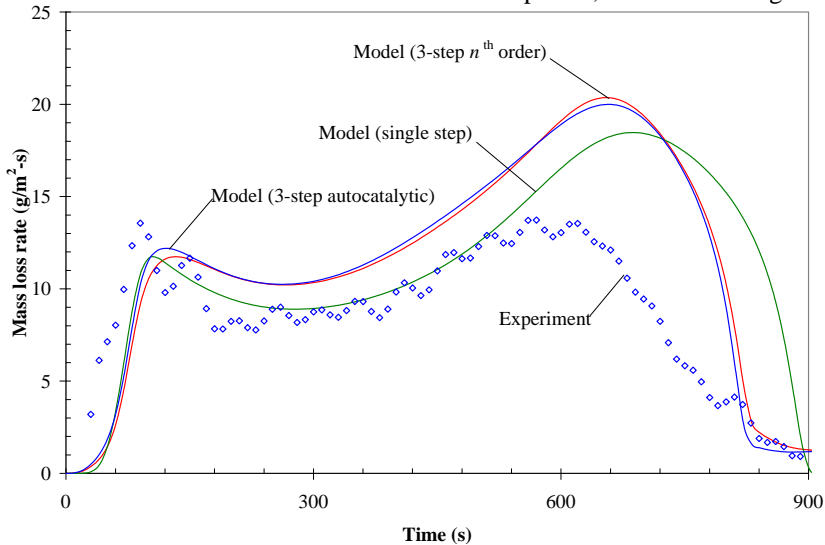


Fig. 5. Comparison of measured and modeled MLR in FPA for three different kinetic models.

## CONCLUDING REMARKS

In the example presented in this paper, a 3-step  $n^{\text{th}}$  order reaction mechanism and a 3-step reaction mechanism with a main autocatalytic step provided nearly identical calculations of thermogravimetric curves and slab pyrolysis in the Fire Propagation Apparatus (FPA) under nitrogen. Compared to the 3-step mechanisms, a single-step decomposition mechanism provides quantitatively different, but similar, MLR predictions of the FPA data. The 3-step  $n^{\text{th}}$  order mechanism requires specification of 19 additional model input parameters (two values each of  $Z$ ,  $E$ ,  $n$ , and  $\Delta H_{\text{vol}}$ , two values each of  $k_0$ ,  $n_k$ ,  $c_0$ ,  $n_c$ ,  $\varepsilon$ , and one value of  $\gamma$ ) over the single step reaction case. In view of the marginal difference between the single-step and the 3-step calculations shown in Fig. 5, it is apparent that for this particular case introducing additional complexity (and degrees of freedom) is superfluous. Essentially, uncertainties in microstructure/anisotropy, material properties, heats of reaction, boundary conditions, experimental measurements, and inter-batch/inter-manufacturer variations dwarf any uncertainty in the decomposition kinetics as determined from TGA.

Although it is difficult to justify use of a multi-step for the material modeled here, no broad conclusions regarding the importance of multi-step thermal decomposition kinetics can be drawn on the basis of a single study. Multi-step reaction mechanisms may be justified for materials with DTG curves that show multiple reaction peaks. If a material's DTG curve can't be fit using an  $n^{\text{th}}$  order reaction, one of the more fundamental kinetic models (e.g., autocatalytic) may be appropriate. If a material shows endothermic behavior in inert environments but exothermic behavior in oxidative environments, a reaction mechanism that includes an endothermic pyrolysis step and an exothermic oxidative step may be warranted. Finally, the additional complexity introduced by multi-step reaction mechanisms may be justified if all other model input parameters (thermophysical properties, radiation characteristics) are accurately known.

## ACKNOWLEDGEMENTS

The authors would like to thank Mr. Charles Dore for fabricating the FRP Composites used in this study. The UC Berkeley authors would like to thank the National Science Foundation for support under Award 0730556, "Tackling CFD Modeling of Flame Spread on Practical Solid Combustibles".

## REFERENCES

- [1] Lautenberger, C., "A Generalized Pyrolysis Model for Combustible Solids", Ph.D. Dissertation, Department of Mechanical Engineering, University of California, Berkeley, Fall 2007. See also <http://code.google.com/p/gpyro>.
- [2] Patankar, S.V., *Numerical Heat Transfer and Fluid Flow*, Hemisphere Publishing Corporation, New York, 1980.
- [3] de Ris, J.L. and Khan, M.M., (2000) A Sample Holder for Determining Material Properties, *Fire and Materials* 24: 219-226, [http://dx.doi.org/10.1002/1099-1018\(200009/10\)24:5<219::AID-FAM741>3.0.CO;2-7](http://dx.doi.org/10.1002/1099-1018(200009/10)24:5<219::AID-FAM741>3.0.CO;2-7)
- [4] Friedman, H.L., (1964) Kinetics of Thermal Degradation of Char Forming Plastics from Thermogravimetry: Application to a Phenolic Plastic, *Journal of Polymer Sci Part C* 6: 183-195, <http://www3.interscience.wiley.com/journal/114174190/abstract>
- [5] Rein, G., Lautenberger, C., Fernandez-Pello, A.C., Torero, J.L., and Urban, D.L., (2006) Application of Genetic Algorithms and Thermogravimetry to Determine the Kinetics of Polyurethane Foam in Smoldering Combustion, *Combustion and Flame* 146: 95-108, <http://dx.doi.org/10.1016/j.combustflame.2006.04.013>
- [6] Avila, M.B., Dembsey, N.A., and Dore, C., (2008) Effect of Resin Type and Glass Content on the Reaction to Fire Characteristics of Typical FRP Composites, *Composites Part A Applied Science and Manufacturing*, accepted for publication.